

Portage County MASTER GARDENER VOLUNTEERS



April 2013



Container/Art Showcase Raffle

For the sixth year we will offer a Showcase Raffle as part of the Garden Parade on July 12th and 13th. Each year our garden guests look forward to viewing and purchasing tickets for their favorite items.

In addition to the flower /herb containers, we would like to offer some garden art. Volunteers are invited to make a creative available. If interested in making either a container or piece of garden art and cannot make the meeting, please contact me at 715-341-0622 or dpozorski722@charter.net

Have fun and thank for volunteering!

Deanna Gertsch-Pozorski—Garden Parade Committee



Contents

- Calendar of Events
- May is Plant Sale Month
- Volunteer Opportunities /
March Meeting Minutes
- May Garden Guide
- Plant Sale Instructions/
Inventory List



Flower Bed Committee

Finally, we are all thinking about getting out to work in our gardens!

Please take some time to also think about the PCMGV gardens that we have developed and maintain in Portage County. Currently there are 19 different areas that we are responsible for. They range from the small showy garden at the entrance to Iverson Park, to the beautiful orange and yellows of the gardens near the Courthouse, to the area around Lincoln Center, and to the Portage County and Plover Libraries.

The Flower Bed Committee has a coordinator for each area, with several of the larger ones being divided up with multi-coordinators. Each flower bed, whether large or small, has specific needs and successes. The coordinator does the planning, and then designates "work days" for other master gardeners to come and help. We plan, dig, plant, grow, compost, mulch, weed, water, and then plan anew for the next year! It is a wonderful way to not only get to know other master gardeners, but also to learn new and proven gardening!

Please consider being part of our committee. We have several areas that need someone to take the lead. These include the Courthouse areas, the Airport entrance, Hein Park (just north of the eastside Walgreen's), and Lincoln Center's multiple areas (containers, perennial beds, shrubs, raised planters).

Join us by calling for more information. We REALLY could use your help and involvement!

*Carole Jansing/Chrismary Pacyna—
Flower Bed Co-Chairpersons*

7- June 4 – Spring Has Sprung: Herbs for Food and Medicine – Olbrich Botanical Gardens, Madison – Did you know that young yellow dock leaves contain a substance that relieves the irritation from stinging nettle? Did you know that cooking, pulverizing, and drying stinging nettle takes away the sting and leaves one of the most nourishing plants on the planet? When this series of four classes (no class May 21) is finished, you will know all of this and a whole lot more! Join herbalist and wild forager Linda Conroy for this fun and inspiring herbal series on Tuesdays from 6:00 to 9:00 p.m. We will visit the early plants of spring and learn plant identification, lore, and harvesting techniques, as well as applications for food and medicine passed down throughout history. You will leave inspired with lots of information, recipes, and preparations for wild food that promotes deep nourishment as well as herbs for healing minor cuts and ailments. This is an experiential class that includes a plant walk, instruction, a handout with recipes, samples, and one or more hands-on projects each week. A \$20 materials fee will be collected on the first day of class by the instructor. \$106 (\$85 members).

11 – Ask A Master Gardener – Fort Atkinson – Jefferson Co. MGVs will answer garden questions and concerns from the audience from 2:00 - 3:30 p.m. Free. At the Hoard Historical Museum, 401 Whitewater Ave, Fort Atkinson, WI. For more information contact the [Hoard Historical Museum](#) at (920) 563-7769.

11 – Birdscaping Your Landscape – Three Lakes – As part of Three Lake's annual International Migratory Bird Day celebration, Mariette Nowak will present *Birdscaping your Landscape* at 1:00 p.m. inside the Three Lakes Center for the Arts, downtown Three Lakes discussing ways to landscape for the birds we enjoy. There will also be bird & nature hikes, live raptors & a wildlife photography presentation by award winning Jeff Richter. \$5. For info contact [Bill Lamon](#).

15 – The Buzz About Native Pollinators – Rotary Botanical Gardens, Janesville – When discussing pollination, the non-native honey bee is often the first insect that comes to mind. However, out of the 500 different species of bees native to WI, many equal or surpass the honey bee's efficiency in pollinating crops and native plants. Hands down, bees are the most important pollinators, but there are others including butterflies, moths, wasps, flies, beetles and hummingbirds that play roles in food production for birds, animals and people. Expert Dr. Hirsch will detail why homeowners and farmers need native pollinators, offer information on how to provide their preferred habitats & discuss the importance of their conservation in this class from 6:30 to 8:00 p.m. \$7 (\$5 members). For info or to register contact [Kris Koch](#) at (608) 752-3885 ext. 17.

16-18 – Chequamegon Bay Birding & Nature Festival Ashland – This annual event offers three days of classes and field trips, including some on native plant gardening, invasive plant ID, and other plant-related topics. At the Northern Great Lakes Visitor Center in Ashland and other nearby locations. Various costs with discounts until May 1. For more information or to register, call (800) 284-9494 or [see the Birding and Nature Festival website](#).

21 – Ornamental Container Gardens – Olbrich Botanical Gardens, Madison – Loved by small and large space gardeners alike, containers are a fabulous way to dress up your patio, deck, or balcony. In this presentation and workshop from 6:30 to 8:30 p.m., Olbrich's Director of Horticulture Jeff Epping and Horticulturist Samara Eisner will guide you on how to plant beautiful containers. You will go home with one finished ornamental container with plants appropriate for the lighting conditions you indicate. Upon registration, indicate whether you prefer sun or shade plants. All materials supplied. \$82 (\$66 member).

25 – Herb Fair and Plant Sale – Hales Corners – The Herb Society of America – WI Unit sponsors this annual event from 9:00 a.m. to 4:00 p.m. Local artisans and plant nurseries will sell herb-related products, including thousands of herbs plants, soaps, dried herbs, medicinals, teas, essential oils, jewelry, ceramics, and much more and educational sessions. Educational sessions include Melinda Myers, horticulturist and author, on the *Care and Use of Elderberry* and then take participants into the garden. She will have books for sale and book signing. The first 60 registrants for will receive a free plant. Melinda's 2 hour workshop is \$15 in advance, \$20 at the door. Bartolotta's Catering offers their popular *Culinary Workshop*, creating a gourmet herbal dish. This workshop is \$15 in advance, \$20 at the door (includes admission to gardens also!). Nino Ridgway, HSA-WI member and owner of Herbs & Everlastings nursery will speak on Popular Culinary Herbs: Tips for Growing and Using Your Favorite Herbs. Admission is \$5 at the door. Entry to the Herb Fair, parking, and most events are free. At Boerner Botanic Gardens, 400 Boerner Dr, Hales Corners, WI. For info visit the [Herb Society's Herb Fair website](#) or call (414) 761-0020.

30 – Responding to Horticulture Inquiries Workshop – Wausau – Designed for county Extension staff and MGVs who will be answering horticulture-related questions this summer. The free program from 9:00 a.m. to 5:00 p.m. will include weed, insect and plant disease updates and more. Other sessions in Town of Norway (May 8) and Dodgeville (May 23). For info or to make a reservation contact [Brian Hudelson](#) at (608) 262-2863.

BOERNER BOTANICAL GARDENS: For info or to register contact Friends of Boerner Botanical Gardens, 9400 Boerner Drive, Hales Corners, WI 53130 at (414)525-5659 or email scheduling@fbbg.org.

CHICAGO BOTANIC GARDENS: 1000 Lake Cook Rd., Glencoe IL 60022. Phone: (847)835-5440.

GARDENS OF THE FOX CITIES: Register for classes on the [Event Calendar](#). For info contact [Gardens of the Fox Cities](#), 1313 E. Witzke Blvd. Appleton, WI 54911 at (920)993-1900.

GREEN BAY BOTANICAL GARDEN: For more information, contact the [Green Bay Botanical Garden](#), 2600 Larsen Road, P.O. Box 12644, Green Bay, WI 54307-2644 at (920)491-3691 ext 103

MN LANDSCAPE ARBORETUM: For info contact the [Education Department](#), Minnesota Arboretum, P.O. Box 39, Chansassen, MN 5531-0039 at (952)443-1422.

NORTHWIND PERENNIAL FARM: For info contact Northwind Perennial Farm, 7047 Hospital Rd, Burlington, WI 53105 at (262)248-8229 or info@northwindperennialfarm.com.

OLBRICH BOTANICAL GARDENS: For info contact Olbrich Botanical Gardens, 3330 Atwood Ave., Madison, WI 53704; phone (608)246-4550 or download the [Classes and Workshops Brochure](#). Pre-registration required, including online registration from the OBG website.

MAY IS PLANT SALE MONTH!

May is plant sale month for MGV's around the state. The PCMGV Plant Sale is Saturday, **May 18, 2013**, at the Rettler Corporation Parking Lot, 3317 Business Park Drive, Stevens Point, across the street from Crossroads Commons. We will have annuals, perennials, herbs and vegetables available from the gardens of MGVs. Some specialty items from a wholesale nursery will also be available. As you know, we label our plants and are on hand to answer horticultural questions.



Here is a list of some other plant sales sponsored by MGV's during the month of May. If you can't be in Stevens Point on May 18, perhaps you can support one of the other sales on that date as well.

May 3-4 – Plant Sale – La Crosse – By the Bluff Country MGA offering annuals, bulbs, hanging baskets, herbs, native plants, ornamental grasses, vegetable plants and more. Friday from 4:00 to 7:00 p.m. and Saturday 8:00 a.m. to noon. At the Concordia Ballroom, La Crosse, WI. For more information contact Lori Marnack at (507) 895-6084.

May 11 – MG Plant Sale – Lancaster – By the Grant Co. MGA, from 8:00 a.m. to noon at the Fairgrounds, Lancaster. For more information call (608) 348-8154.

May 11 – Plant Swap – Neillsville – This annual event by the Clark Co. MGA at the Clark Co. Fairgrounds starts at 7:30 a.m. and ends around 11:00 a.m. or whenever all the plants are sold. For more information contact [Kim Twesme](#).

May 18 – MG Plant Sale – Appleton – The Outagamie Co. MGA will offer a wide variety of new types of perennial and annual flowers, shade plants, vegetable plants, herbs, grasses, garden compost, info demos, vendors, garden treasures, and yard sale items all at reasonable prices. MGVs will be available throughout the sale to answer gardening questions and personally help shoppers select plants for individual garden sites. From 8:00 a.m. to 2:00 p.m. at the Outagamie Co. UWEX grounds at 3365 West Brewster St, Appleton. For more information contact [David](#) at (920) 735-9855 or [Outagamie Co. MGA's](#)

May 18 – Plant Sale – Dodgeville – The Uplands Garden Club will offer annual and perennial flowers, vegetables (many heirlooms), herbs, prairie plants, woodland plants, rock garden plants, grasses, trees, shrubs, houseplants, lots of peonies iris, daylilies and hosta at their annual sale from 8:00 to 11:00 a.m. at the Ley Pavillion at Harris Park, Dodgeville. For more information contact Betsy D'Angelo at (608) 935-5937 or Mary Mayo at (608) 935-3509.

May 18 – MGA Plant Sale – Wisconsin Rapids – Offered by the Wood Co. MGA at Witter Field (corner of Chestnut and 8th St) Wis. Rapids. The sale features a combination of offerings (annuals, perennials and more!) from our own gardens as well as some special items from a wholesale nursery. For more information, contact Barb at (715) 325-2075.

May 25 – MG Plant Sale – Fond du Lac – The Fond du Lac Co. MGA will be selling plants from 9:00 a.m. to 3:00 p.m. at UW-FDL, 400 University Dr., Fond du Lac. For more information contact [Kathy Schneider](#) at (920) 929-3172.

PCMGV Board Members

Chairperson:

Shelley Binder:
shellb58@hotmail.com
(715) 341-9414

Vice Chairperson:

Rick Jansing:
rickjansing@att.net
(715) 344-2118

Secretary:

Sandra Newby:
(715) 457-2505

Treasurer:

Kathy Stanke
(715) 570-7885
rkstanke@charter.net

Director of Committees:

Chere Schmit:
dcschmit@hotmail.com
(715) 258-0153

WIMGA Representative:

Lynn Caine:
dljed@charter.net
(715) 344-1564

Member at Large:

OPEN

UW Extension Ag Agent:

Ken Schroeder:
ken.schroeder@ces.uwex.edu
(715) 346-1316

Committee Chairs

*Chair **Co-chair

Bylaws

Cindy Bredow *

Display

Barb Gifford *
Open**

Flower Beds

Chrismary Pacyna *
Carole Jansing **

Funds/Grants

Cindy Bredow *

Garden Dreams

Charlotte Kolinski *
Sally Prideaux **

Garden Parade

Katie Rettler *
Bob Rausch **

Habitat House

Jennifer Young *
Jen Haas **

Hunger Prevention/ Head Start

Open

Membership

John Kolinski *

Plant Sale

Chere Schmit *
Kathy Herbert **

Programs

Tina Lechner *
Diane Somers **

YMCA Gardens

Dan Goulet *

Coordinators

Amherst Fair

Open

Arbor Day

Open

Chicago Bus Trip

Bob Rausch
Sally Prideaux

Farmers Market

Todd Teuchert
Lori Teuchert

Fundraisers

Open

Garden Line

Open

KMart Potting Day

Open

Newsletter

Marian Helm

Rosholt Fair

Todd Teuchert

Website

Lynn Caine

Articles for the newsletter should be submitted by the **10th of the month** for publication that month.

Submit to: Marian Helm: azmhelm@yahoo.com or 715-347-5265

Please send any address changes to: Bonnie Maier: bonnie.maier@ces.uwex.edu or 715-346-1316

WANTED!

1 or more PCMGVs

Task: Create a window display to advertise the 2013 Garden Parade.

Where: Portage County Public Library (downtown) window display area.

When: Display to be put up about the 1st week of July, 2013, prior to Garden Parade. The Garden Parade event is July 12 & 13, 2013

Contact: Elfri Goskowicz for details 715-630-5431
timgosk@gmail.com

Thank you, Elfri

PCMGV Meeting Minutes March 25, 2013

Present: Margaret Bau, Sandy Boehm, Cindy Bredow, Donald Caine, Lynn Caine, Eric Ecklund, Deanna Gertsh-Pozorski, Timothy Goskowicz, Dan Goulet, Kathy Goulet, Rose Grych, Jen Haas, Kathy Herbert, Carole Jansing, Rick Jansing, Rita Kozlowski, Kathy Kruthoff, Tina Lechner, Marily Malcolm, Ellie Mendyke, Pat Mrozinski, Sandra Newby, Stephanie Olson, Carole Olson, Chrismary Pacyna, RoseMarie Piekarski, Katie Rettler, Rebecca Roberts, Leanna Rusch, Chere Schmit, Don Schmit, Nick Schultz, Kathy Stanke, Todd Teuchert, Lori Teuchert, Judith Thies, Kirby Throckmorton, Joanne West, Gail Zalewski, Sherry McHone and Portage County Ag Agent Ken Schroeder.

The meeting was called to order at 6:00 p.m. by Rick Jansing at the Annex.

Minutes from the February meeting were approved with the correction: Garden Dreams is January 11, 2014.

Treasurer's Report was presented by Kathy Stanke.

PCMGV Meeting Minutes continued...

Committee Reports:

Flower Beds: Chrismary Pacyna thanked MGV for their help in the past. We maintain 19 flower beds. There are varying sizes from small to large with Court House bed having the greatest need, at this time. The entrance of the Court House has been remodeled and Patti Drier asked if PCMGV would maintain that area. Contact Chrismary or Carole Jansing to be matched up with a flower bed. The Flower Bed committee will meet on Monday, April 15th at 6:30 at Chrismary's home.

Garden Parade: Katie Rettler requested help with putting up a display in the downtown library window beginning July 1. Garden Parade is July 12-13. Tim Goskowicz circulated a sign-up sheet.

Y Garden: Dan Goulet had a planning meeting on March 26. He will be requesting help at the April meeting.

Plant Sale: Chere Schmit has the plant labels for the May 18 sale.

Old Business:

There are two open Board of Director positions.

WIMGA: Lynn Caine

- Lynn expressed how very fortunate PCMGV are compared to multiple problems facing a number of other counties.
- Wood County MGV includes WI Rapids and Marshfield.
- **CE hours:** Wood County MGV Spring Seminar at WI Rapids April 27, 8- 12. Jeff Gilman, Decoding Gardening advice and Daryl Plesak , lilies.
- For info on three new tomato cultivars resistant to late blight, see the Cooperative Extension podcast at <http://fyi.uwex.edu/news/2013/03/01/new-tomato-varieties-fight-late-blight/>
- Contact Lynn about CE hours at the Chequamegon Bay Birding and Nature Festival in Ashland May 16-18.
- Contact Lynn about Online Modules for MGVs on Current Pest and Pathogen Problems or to access the modules go to <http://mg.cropsci.illinois.edu/>

Extension Report: Ken

- Waushara County - Brian Hudleson will have a presentation on Plant Pathology.
- Soil testing is important. Soil bags and probes are available at the Extension Office.

Announcements:

- Through a partnership with the Wood County Health Dept., Marshfield-based Security Health Plan has awarded \$100,000 in grants for central WI area schools and child care centers to develop gardens.
- Tina Lechner introduced the idea of purchasing a projector. Nick Schultz will check into possibly getting a used one.
- The next meeting is April 22 at the Annex.
- The meeting adjourned at 6:30 p.m.
- **Continuing Education:** CAP Services & Head Start - Vicki Haefel & Pat Mrozinski, 30 minutes There are many opportunities to help. Sign-up were available.

Submitted by Sandra Newby PCMGV secretary

Your county
extension office



UW
Extension
Cooperative Extension
Portage County

**Cooperative Extension
University of Wisconsin—Extension**

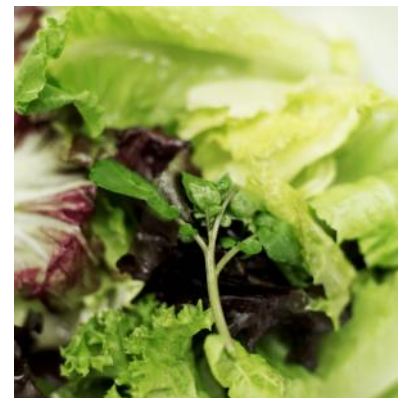
Portage County UW-Extension
817 Whiting Avenue
Stevens Point WI 54481
Phone: 715-346-1316
Fax: 715-346-1323

Return Service Requested



May Garden Guide

- Set Easter lilies in garden.
- Plant cool-weather crops: lettuce, spinach, chard, parsnip, onion sets, beets, carrots, kohlrabi, mustard, turnips, radishes, peas, parsley, and potatoes in early May. Soil temperatures should be at least 45 degrees.
- Plant snap beans, pole beans, sweet corn, and onion plants in mid-May. Sweet corn planted earlier in the season has fewer pest problems.
- Inspect for Iris borer larva on iris leaves. Crush larva.
- For bigger Peony flowers, de-bud several branches. Stake before buds open.
- Set out pansy plants when ground is workable.
- Dig and divide mid summer and fall blooming perennials before tip growth gets too tall.
- Plant tuberous begonias.
- Watch birch leaves for birch leaf miner infestation. Use sticky traps to monitor emergence of adults to help time spraying with summer oil, Neem extract, or rotenone. Sprays are only effective on adults or larvae before they tunnel into leaves. Some soil applied systemic chemicals may be effective in controlling larvae after they have tunneled into leaves.
- Plant and transplant new evergreens before new growth appears.
- Plant tomato seedlings by pinching off lower leaves and placing on its side in a shallow furrow 2.5 inches below the soil surface. Soil closer to the surface is warmer and will speed tomato growth.
- Plant strawberries, bush fruits, and grapes in mid month. Pinch blossoms from newly planted strawberries to develop strong plants for next year.
- Remove faded flowers from spring-flowering bulbs. Cut off stalks but allow leaves to die down naturally. Fertilize after blooming with 5 10-20.
- Plant stored geraniums in well-drained soil after last frost and keep moist. New growth should begin in one week.
- Prune spring-flowering shrubs after flowers have faded. Apply fertilizer.
- Toward end of the month, harden off seedlings of vegetable transplants and annuals grown indoors. Bring in at night or place in cold frames before planting in garden.



CALLING ALL MASTER GARDENER VOLUNTEERS:

Even though it seems that spring is never going to arrive this year the Plant Sale will be here before we know it, and once again we could use your help! As you survey your flowerbeds, and see that some of your perennials need dividing, please consider potting them up for the Plant Sale on May 18th, at the Rettler Corporation Building. Or if you have started vegetables from seed, we can certainly use any extras you might be willing to share with us. The Plant Sale is our major fund raiser and the profits are used for the monthly programs (that we all enjoy), scholarships, and books for local libraries. Remember: to be reimbursed for potting soil that you use, bring your receipts to the April 22nd meeting and give them to Kathy Stanke....also, the time it takes to dig and pot up your plants can be counted as volunteer hours!

PLANT INVENTORY LIST:

The plant inventory list is in this month's newsletter. Please fill it out and turn it in to either Kathy or myself at the meeting, so the labels can be printed, and a count can be made of the number of sticks you need. Packets with your labels and sticks will be handed out at the May 13th meeting. (If you pot up more plants after you turn in your list, you can write plant info on the sticks with a No. 2 pencil.) If you print your own labels, we still need a count for the number of sticks you need so we get them bundled together before the meeting.

2013 PLANT SALE GUIDLINES:

Friday May 17th: Set-up begins at 3 p.m. Please have your dozen (or more) plants labeled so they can be placed in the appropriate rows. Plants need to be arranged according to genus and species, and then by cultivar and color. (This year we are also going to arrange plants into sun and shade categories.) Pricing will begin when a good number of plants have arrived. When ALL of the plants are priced, we can then begin buying. To be fair to everyone, no plants may be set aside ahead of time, and any plants found sitting out will be put back.

Saturday May 18th: Please arrive around 6:30 a.m. and park in the WIAA lot, not on the street or at the Biolife Plasma Services lot (as they work on Saturday). We have tables to set up for the checkout, vegetables, and other last minute details that need to be attended to. If you are assigned a row, familiarize yourself with the plants in it. Make sure all of the plants are priced and labeled. If possible, bring a garden catalog or book with pictures to show prospective buyers what particular plants look like in bloom. Remember to wear your name badges, and your logo clothes or hats if you have them.

Plants may be purchased before the sale begins, but please get them to your vehicle (in the WIAA lot) right away. No plants are to be stored in the shed for later purchase. When it is time to sell for half-price, a sign will be put up and a whistle will be blown. Please don't tell buyers we go to half-price at a certain time as that is variable. If you work the checkout, do not give the customers the pricing sticks or sales slips. We need the sales slips for accounting purposes, and the pricing sticks are reused each year. After all sales are completed, any plants needed for community projects can be taken. If you should want any of your own unsold plants back, they can be taken at clean-up.

We could use more sleds and wagons this year. For those of you that bring them, PCMG signs will be supplied for identification. And please start saving water or beverage boxes to be used at the sale. If you have an over abundance of 4" pots, please bring them to the April meeting to share with fellow MGVS.

This year we thought that it would be nice to have a picture board set up at the driveway entrance to the Plant Sale. While our customers are waiting to come in, they can drool over the pictures of some of the plants that will be available. If you have any pictures of the plants that you are donating we would like to include them on the board. You can give them to Chere or Tim Goskowicz at the April 22nd or the May 13th meeting.

The Plant Sale is a lot of work, but with everyone lending a hand it is easily accomplished. THANK YOU to all who are donating plants or helping out in any way. We really appreciate your help!

Chere Schmit, Kathy Herbert and the Plant Sale Committee

PLANT INVENTORY LIST:

The plant inventory list is in this month's newsletter. Please fill it out and bring it to the April 22nd meeting, or get it to Chere Schmit by May 8th, so the labels can be printed. Packets with your labels and sticks will be handed out at the May 13th meeting. If you pot up more plants after you turn in your list, you can write the plant info on the sticks with a No. 2 pencil. After reviewing last year's plant donations and sales, the committee requests that the following plants NOT be brought to the Sale: tansy, wild violets, wild daisies, and orange "ditch" lilies

